



INDUSTRIES INC

Chain & Industrial Manufactured Solutions



**Non-Metallic Process Chains**

**Connexus Industries** manufactures Non Metallic Process Chain and Sprockets in North America. Injection molded by our state of the art Battenfeld Injection molding machines. Connexus offers Non Metallic Process Chains in Acetal and Nylon.

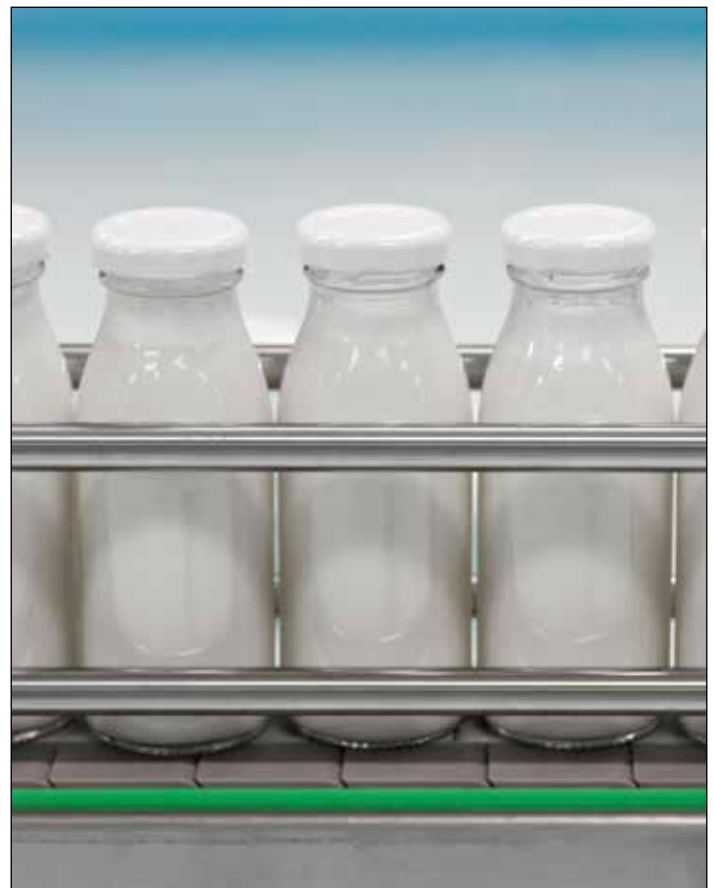
**Connexus Industries** has successfully integrated our tradition of precision manufactured products with the polymer industry manufacturing high quality acetal & nylon chains and attachments using 304 stainless steel pins, sprockets and ancillary products.



- BOTTLING PLANTS
- FOOD PROCESSING
- DAIRIES
- BAKERIES
- BUCKET ELEVATORS
- AGRICULTURE
- WASTEWATER
- PHARMACEUTICALS
- CLEAN WATER
- FISH PROCESSING
- PACKAGING

Some applications require consultation with Connexus Industries engineering to determine suitability of the application.

Integral Chain Attachments available.



## APPLICATIONS

- Non Metallic Chain is manufactured in Acetal and Nylon
- Assembled with 304 Stainless Steel pins
- Food-safe
- Corrosion resistant
- Manufactured for all industries



**Chemical resistance chart of acetal material**

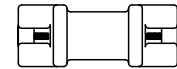
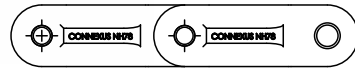
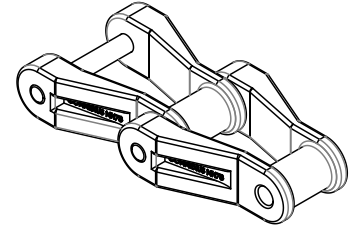
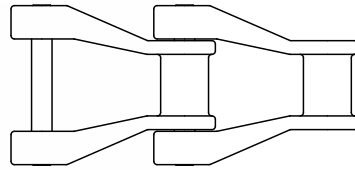
<p><b>Ammonia</b></p> <p><b>Beer</b></p> <p><b>Beverages, Soft drinks</b></p> <p><b>Benzine</b></p> <p><b>Carbon tetrachloride</b></p> <p><b>Formaldehyde</b></p> <p><b>Glucose</b></p> <p><b>Hydraulic fluid</b></p> <p><b>Hydrogen peroxide 3%</b></p> <p><b>Iodine</b></p> <p><b>Kerosene</b></p> <p><b>Milk</b></p> <p><b>Motor Oil</b></p> <p><b>Oils (vegetable and mineral)</b></p> <p><b>Soap water</b></p> <p><b>Sodium hydroxide 10%</b></p> <p><b>Sulphuric acid 10%</b></p> <p><b>Water (fresh &amp; salt)</b></p>	<p><b>Acetic Acid</b></p> <p><b>Acetone</b></p> <p><b>Citric Acid</b></p> <p><b>Vinegar</b></p>	<p><b>Bleach</b></p> <p><b>Bromine water</b></p> <p><b>Chlorine</b></p> <p><b>Formic acid</b></p> <p><b>Hydrochloric acid</b></p> <p><b>Hydrocyanic acid</b></p> <p><b>Nitric acid</b></p> <p><b>Phosphoric acid 25%</b></p> <p><b>Sodium hypochloride (bleach)</b></p> <p><b>Sulphuric acid 10%</b></p>
<p><b>Resistance at 23°</b></p> <p><b>None or very little attack or distribution</b></p>	<p><b>Resistance at 23°</b></p> <p><b>Slight attack or distortion dependent on use</b></p>	<p><b>Resistance at 23°</b></p> <p><b>Bad attack. Unsuitable for use in this environment</b></p>

The above table shows some of the most popular chemicals. We would be happy to help you with chemicals that are not specifically tabulated.

# CHAIN SPECIFICATIONS

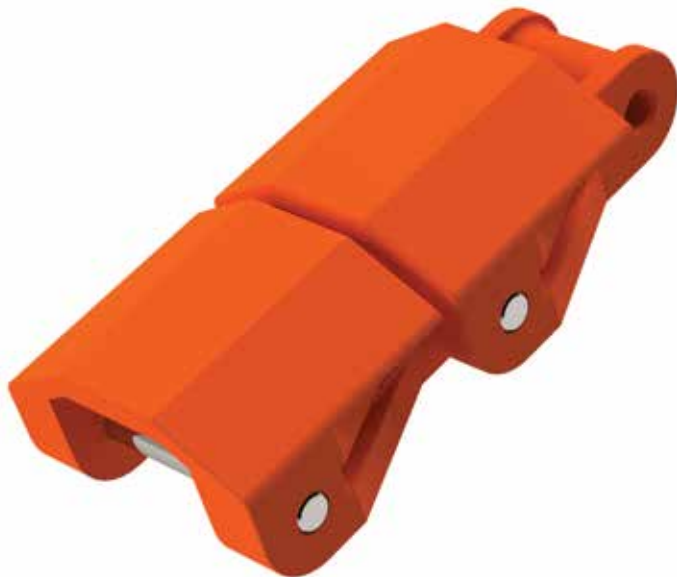


NH78 - CXS

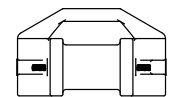
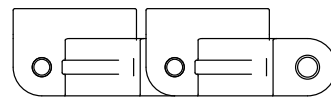
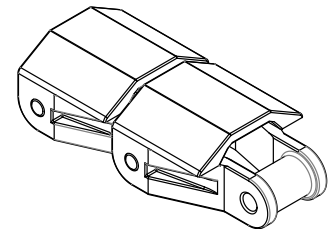
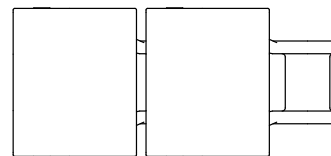


NH78 - CXS

Chain Part No.	Pitch (inches)	Weight (lbs/ft)	Working Load (lbs./ft.)	Pin Diameter (inches)	Pin Material (inches)	OAW (inches)
NH78	2.609	1.41	1,800	0.375	304 Stainless Steel	2.950

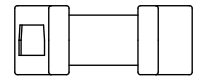
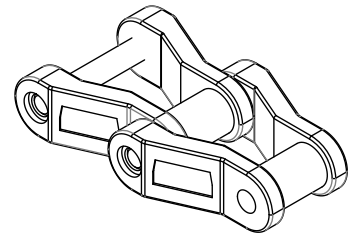
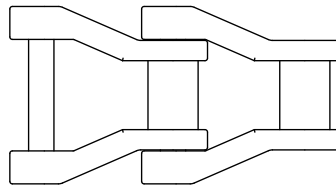


NH78CB - CXS



NH78CB - CXS

Chain Part No.	Pitch (inches)	Weight (lbs/ft)	Working Load (lbs./ft.)	Pin Diameter (inches)	Pin Material (inches)	OAW (inches)	OAH (inches)
NH78CBB	2.609	1.50	1800	0.375	304 SS	2.95	1.875

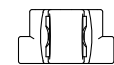
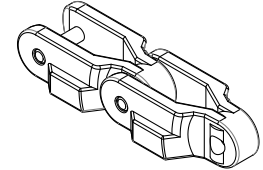
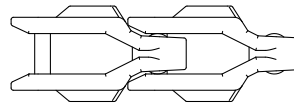


NH45 - CXS

Chain Part No.	Pitch (inches)	Weight (lbs/ft)	Working Load (lbs./ft.)	Pin Diameter (inches)	Pin Material	OAW (inches)
NH45	1.63	0.90	1,000	0.630	304 Stainless Steel	2.19



1400 & 1401 CXS

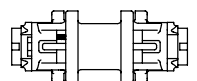
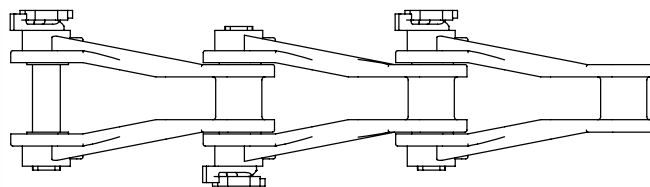


1400 & 1401 CXS

Chain Part No.	Pitch (inches)	Weight (lbs/ft)	Working Load (lbs./ft.)	Pin Diameter (inches)	Pin Material	OAW (inches)	Flex Radius
1400 No tabs 1400 c/w tabs	3.250	0.91	1250	0.375	304 Stainless Steel	4.980	Rb75 2.95



720 CXS



720 CXS

Chain Part No.	Pitch (inches)	Weight (lbs/ft)	Working Load (lbs./ft.)	Barrel Diameter (inches)	Pin Diameter (inches)	OAW (inches)
VC720SNM	6.000	1.4	3,100	1.438	0.875	4.980

## CONTACT US



LANGLEY  
BRITISH COLUMBIA

27474 Gloucester Way, Langley BC, Canada V4W 4A1  
t **604.882.1602**      f **604.882.1603**      toll free **1.800.324.1244**

SAINT-ROMUALD  
QUEBEC

1892 1<sup>re</sup> Rue, St Romuald, QC, Canada G6W 5M6  
t **418.834.5116**      f **418.834.5901**      toll free **1.888.650.6090**

ATLANTA  
GEORGIA

3411 Novis Pointe, Acworth, GA, USA 30101  
t **678.797.0777**      f **678.797.5554**      toll free **1.877.941.1500**

[www.connexusindustries.com](http://www.connexusindustries.com)