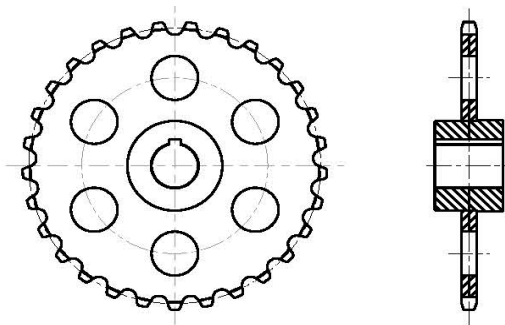


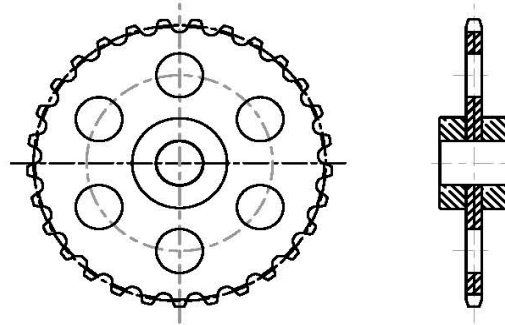
# SPROCKETS

## CONVEYOR CHAIN SPROCKETS

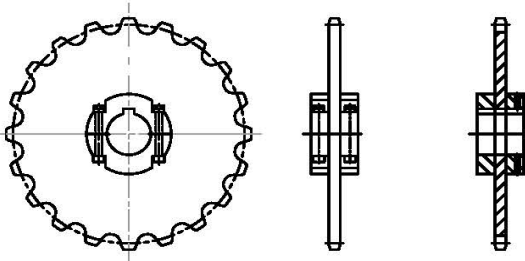
- Cast Sprockets (grey iron, hardened teeth or deep chilled rim)
- Steel Sprockets (flame cut or precision machined with through hardened or induction or induction hardened teeth)
- Solid sprockets available as "A" plates or with "B" or "C" hub with finished bore key and 1 or 2 setscrews
- Split or replaceable tooth sprockets are available for easy installation



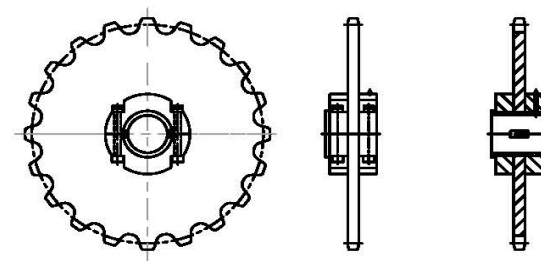
**SOLID SPROCKET DRIVE**



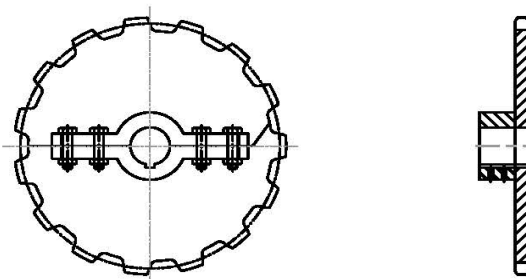
**SOLID SPROCKET IDLER**



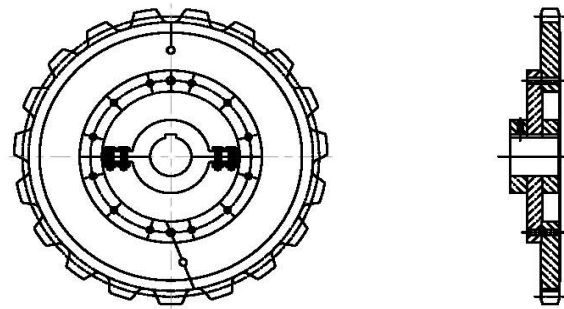
**SPLIT SPROCKET-DRIVE (ROUND HUB)**



**SPLIT SPROCKET-IDLER (ROUND HUB)-BUSHING OPTIONAL**



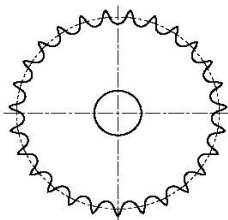
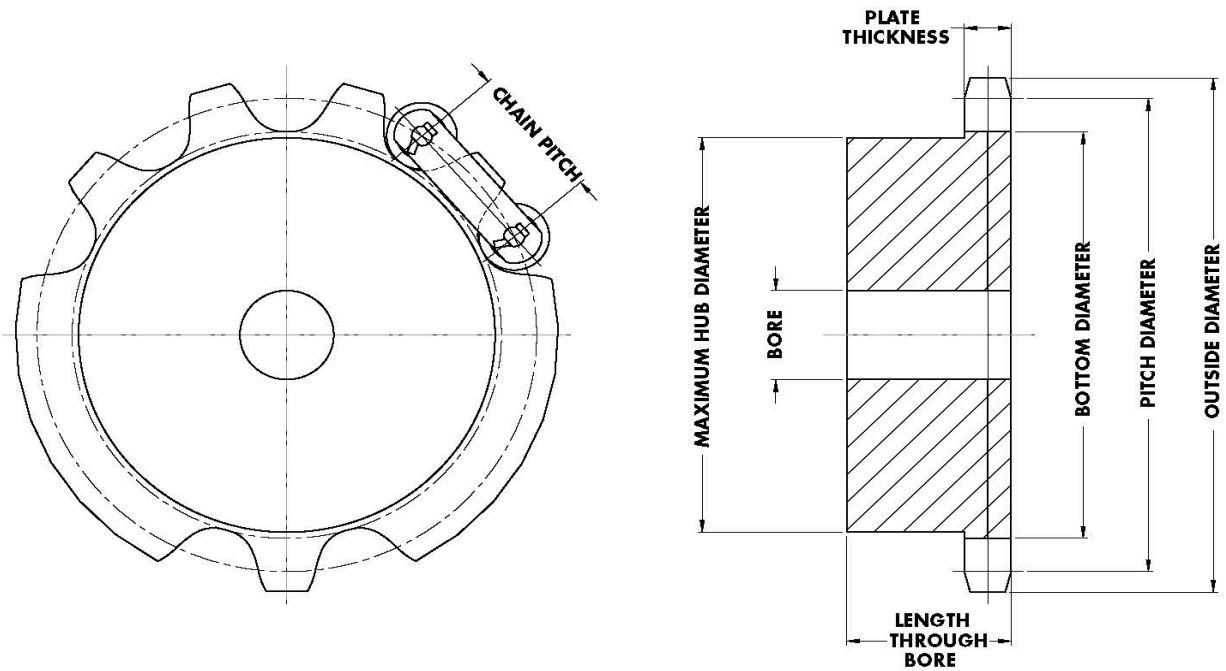
**SPLIT SPROCKET-DRIVE**



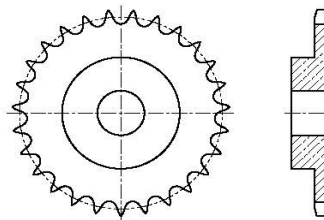
**SPLIT SPROCKET WITH REPLACEABLE SEGMENTS**

# SPROCKETS

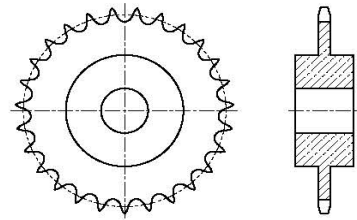
Required dimensions for quote: Chain type and Chain pitch, Sprocket Outside Diameter , Pitch Diameter , Hub Style (A, B, C), Hub Outside Diameter and length through the bore, bore size, key dimensions and set screws, any other special requirements.



**TYPE A**



**TYPE B**



**TYPE C**