



a division of



Enviro Catalogue



VC720S NON-METALLIC CHAIN

VC720SNM CHAIN

CHAIN SPECIFICATION

Non-Metallic Collector Chain

- 6.00" Pitch
- Glass Filled Nylon Material
- 3,100 lb. Working Load
- Average Ultimate Strength of 7,000 lb
- 1.4 lbs Per Foot



ATTACHMENTS AVAILABLE

F226 and F228

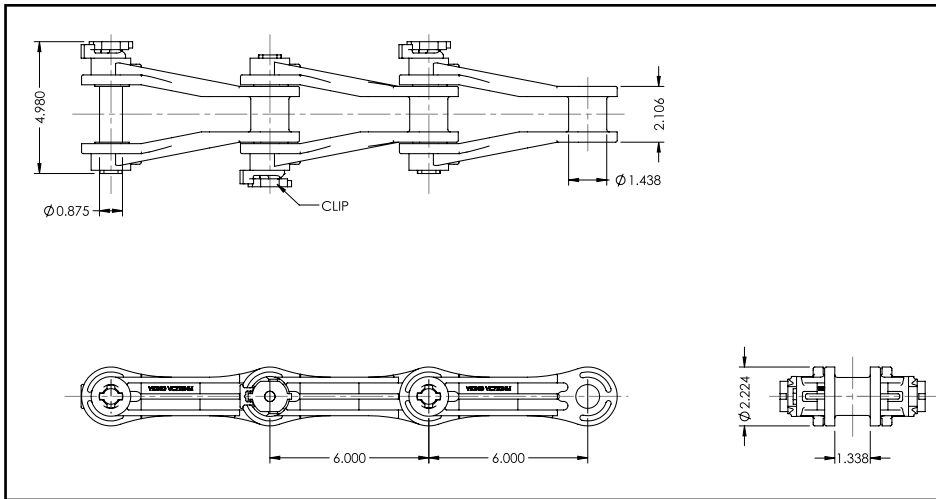
APPLICATIONS

Collector chain for primary and secondary clarifiers.

BENEFITS

VC720S Non-Metallic Chain is lightweight and designed for easy installation. Chain is compatible with other chain manufacturer's non-metallic sprockets and components. No special tools are required for chain assembly.

VC720S NON-METALLIC CHAIN



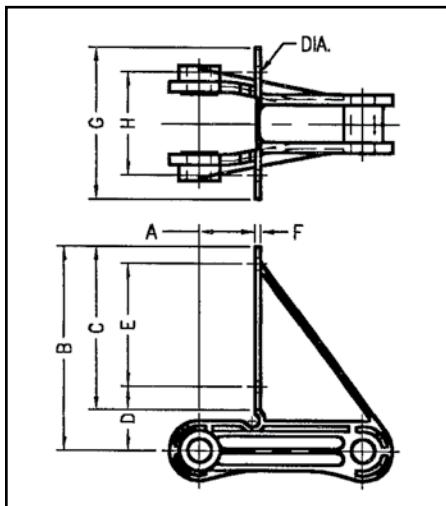
Additional equipment available for rectangular clarifiers, bar screens and grit collectors;

- Other Chain and Attachments
- Drive Chain
- Sprockets
- Bearings
- Flights
- Filler Blocks
- Wear Materials
- Hardware

Dimensions, Weight and Strength of VC720S Non-Metallic Chain

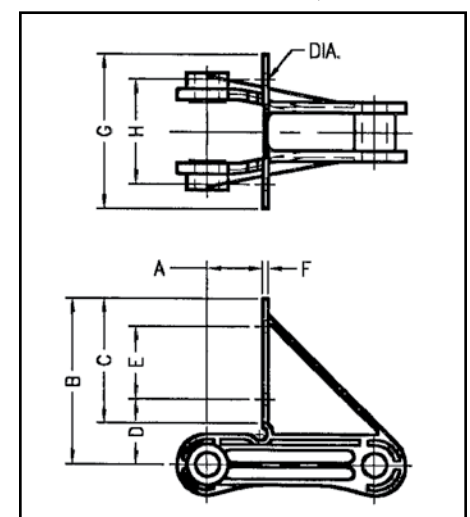
Chain Part No.	Pitch (inches)	Weight (lbs.)	Working Load (lbs./ft.)	Barrel Diameter (inches)	Pin Diameter (inches)
VC720SNM	6.00	1.4	3,100	1.438	.875

VC720S NON-METALLIC/F228



Chain Part No.	A	B	C	D	E	F	G	H	Hole Dia.
VC720SNM-F228	2.00	8.25	6.75	2.715	4.50	.33	5.50	3.75	.438

VC720S NON-METALLIC/F226



Chain Part No.	A	B	C	D	E	F	G	H	Hole Dia.
VC720SNM-F226	2.00	6.125	4.625	2.715	2.63	0.33	5.50	3.75	.438

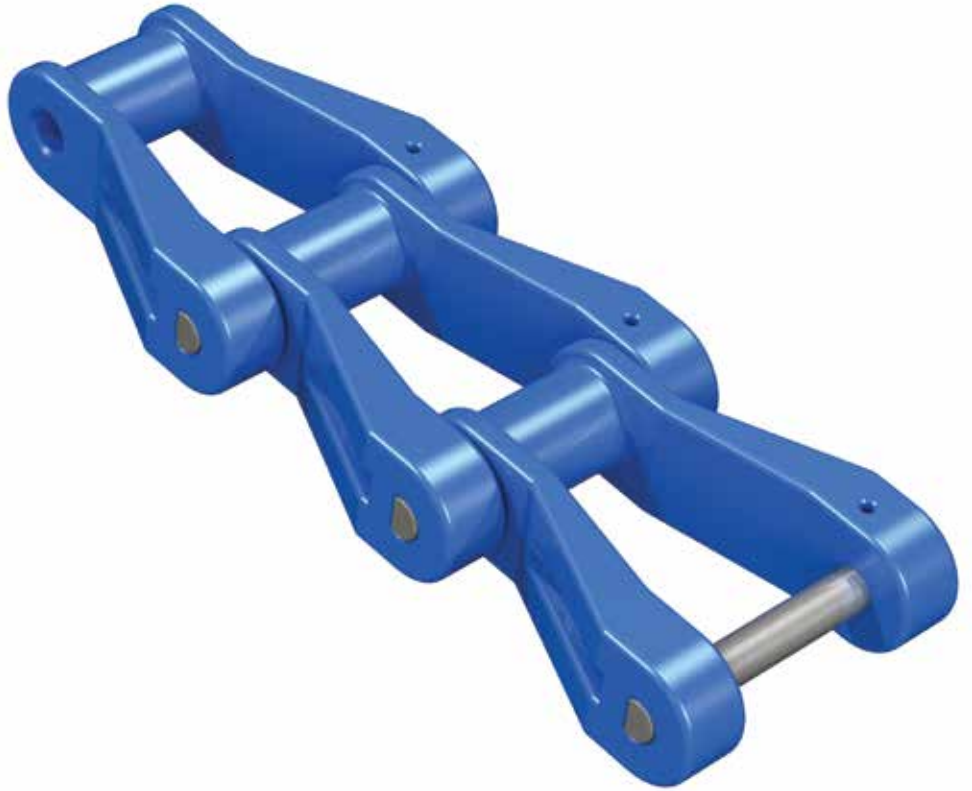
VC78 NON-METALLIC CHAIN

VC78NM CHAIN

CHAIN SPECIFICATION

Non-Metallic Drive Chain

- Glass filled Nylon material
- 2.609" Pitch
- 304SS pin
- Maximum working load
1,800 lbs
- 5,000 lbs Average
Ultimate Strength

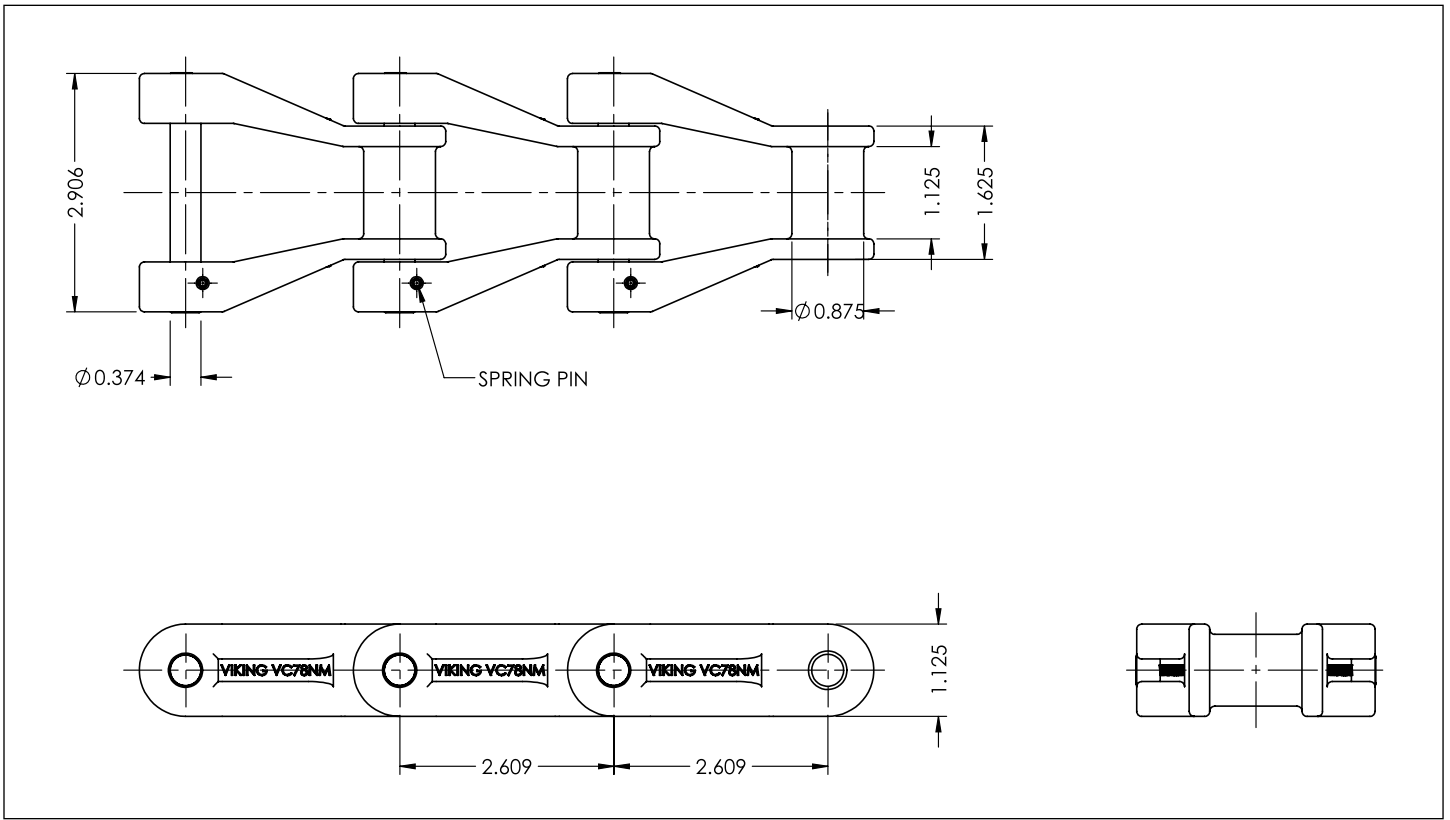


APPLICATIONS

Drive chain for wastewater treatment applications.

BENEFITS

VC78NM chain is designed to run in both directions. Excellent performance in applications requiring high wearability and chain strength.



Dimensions, Weight and Strength of VC78 Non-Metallic Chain

Chain Part No.	Weight (lbs./ft.)	Maximum Working Load (lbs.)	Backflex Radius (inches)
VC78NM	1.41	1800	3

Additional equipment available for rectangular clarifiers, bar screens and grit collectors;

Chain and Attachments

Other Drive Chains

Sprockets

Bearings

Flights

Filler Blocks

Wear Materials

Hardware

VCSS700 STAINLESS STEEL CHAIN

VCSS700 CHAIN

CHAIN SPECIFICATION

Stainless Steel Collector Chain

- 6.00" Pitch
- 403 Grade
Stainless Steel Material
- 33,000 lb. Average
Ultimate Strength
- 3.9 lbs Per Foot
- Hardened Pins and Bushings

ATTACHMENTS AVAILABLE

F226, F228, D22, K2, A2,
A42, AM116

APPLICATIONS

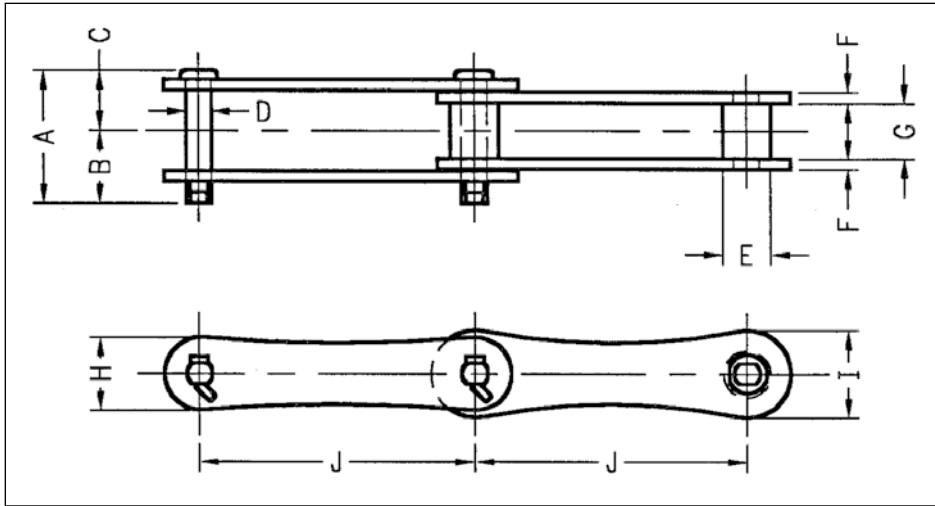
For use in primary and secondary
clarifiers, grit collectors,
and bar screens.



BENEFITS

VCSS700 stainless steel chain is a lightweight but high strength chain designed to withstand highly corrosive environments. Provides superior performance in long length clarifiers with high loads and longer chain life in high grit and abrasive environments. Designed to be compatible with VCSS700 series sprockets and with other stainless steel chain manufacturer's components. Can be used with either fiberglass, laminated wood or aluminum flights.

VCSS700 STAINLESS STEEL CHAIN



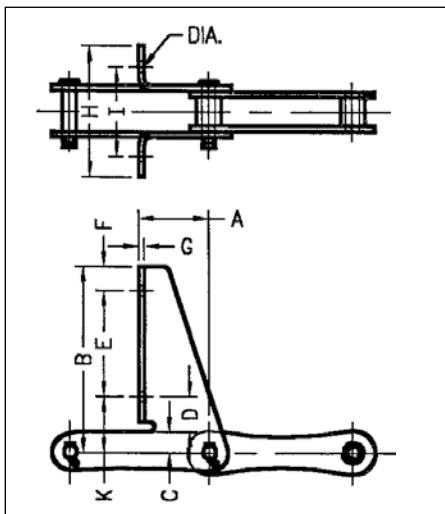
Additional equipment available for rectangular clarifiers, bar screens and grit collectors;

- Other Chain and Attachments
- Drive Chain
- Sprockets
- Bearings
- Flights
- Filler Blocks
- Wear Materials
- Hardware

Chain Part No.	A	B	C	D	E	F	G	H	I	J(pitch)
VCSS700	2.842	1.55	1.292	.570	1.024	.236	1.188	1.574	1.890	6.00

All dimensions are in inches

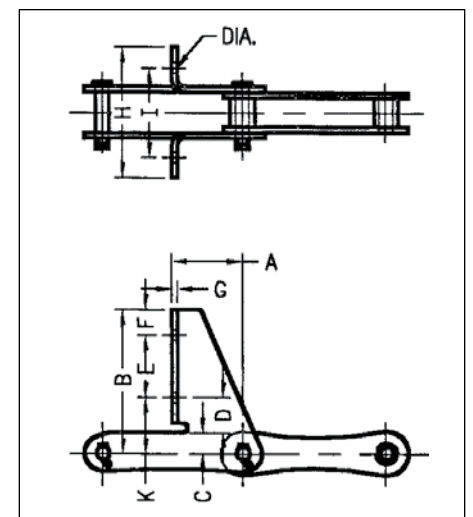
VCSS700/F228



Chain Part No.	A	B	C	D	E	F	G	H	I	Hole Dia.
VCSS700-F228	3.00	7.875	0.787	1.587	4.50	1.00	.236	5.50	3.75	.438

Chain Part No.	A	B	C	D	E	F	G	H	I	Hole Dia.
VCSS700-F226	3.00	6.109	0.787	1.587	2.625	1.109	.236	5.50	3.75	.438

VCSS700/F226



VCSS701 STAINLESS STEEL CHAIN

VCSS701 CHAIN

Direct Replacement for Non-Metallic Chain

CHAIN SPECIFICATION

Stainless Steel Collector Chain

- 5.844" Pitch
- 403 Grade
Stainless Steel Material
- 19,000 lb. Ultimate Strength
- 2.2 lbs Per Foot
- Hardened Pins and Bushings



ATTACHMENTS AVAILABLE

F226 and F228

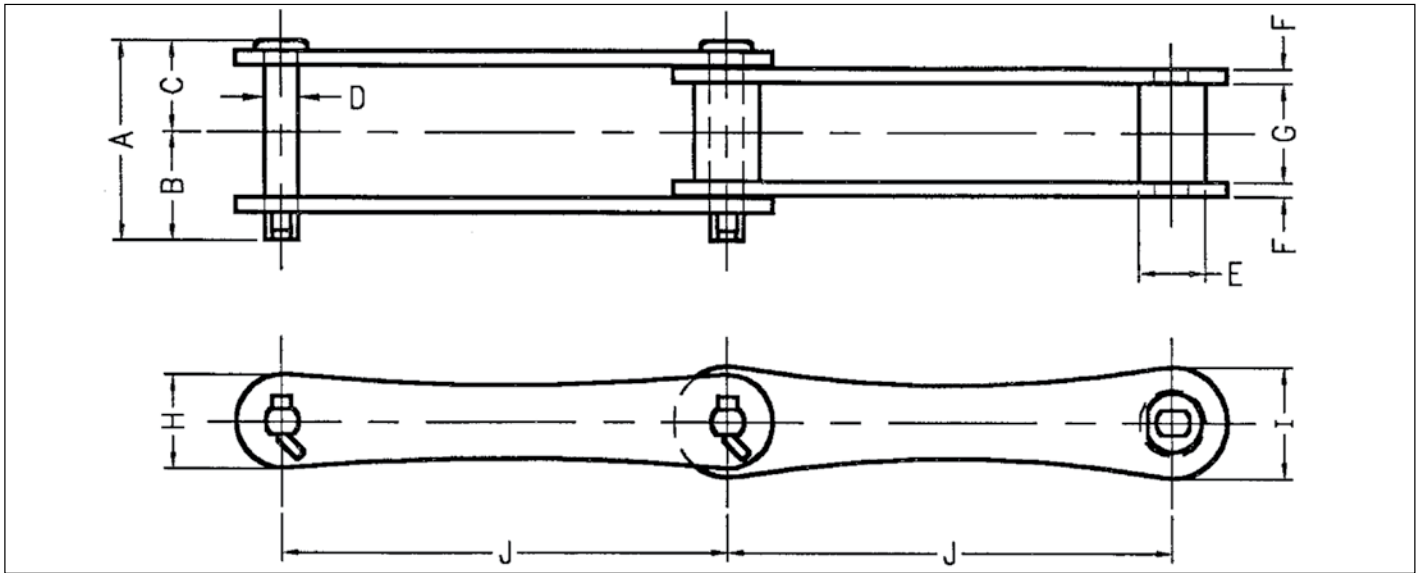
APPLICATIONS

For use in primary and secondary clarifiers.

BENEFITS

VCSS701 stainless steel chain is a lightweight stainless steel alternative for use in applications that have utilized non-metallic chain. It is designed to run on standard 720S style sprockets - perfect if sprockets are not in need of change out. This lightweight but high strength chain will withstand highly corrosive environments. It is compatible with other chain manufacturer's components.

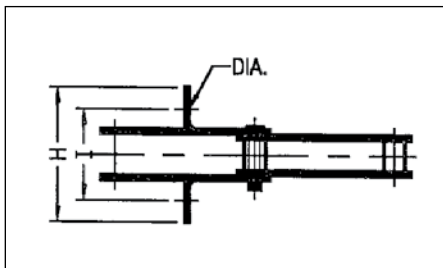
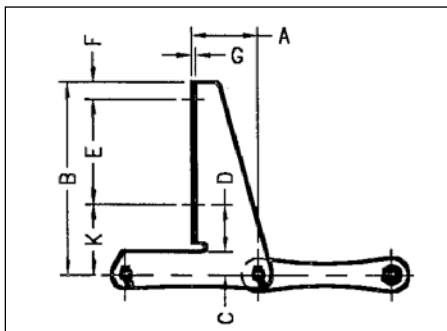
VCSS701 STAINLESS STEEL CHAIN



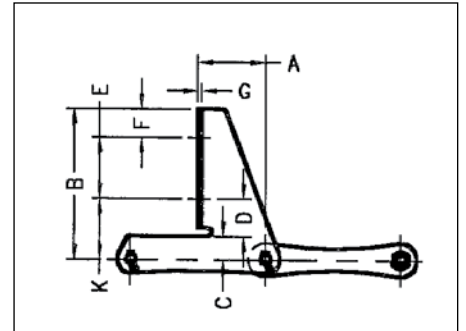
Chain Part No.	A	B	C	D	E	F	G	H	I	J (pitch)
VCSS701	2.578	1.406	1.172	.453	.882	.188	1.266	1.219	1.453	5.844

Chain Part No.	A	B	C	D	E	F	G	H	I	Hole Dia.
VCSS701 / F228	2.913	8.266	1.00	1.641	4.50	.735	.188	5.50	3.75	.438

VCSS701/F228



VCSS701/F226



Chain Part No.	A	B	C	D	E	F	G	H	I	Hole Dia.
VCSS701 / F226	2.913	6.50	1.00	1.641	2.625	1.234	.188	5.50	3.75	.438

VC78SS STAINLESS STEEL CHAIN

VC78SS CHAIN

CHAIN SPECIFICATION

Stainless Steel Drive Chain

- 2.609" Pitch
- 403 Grade Stainless Steel Material - Hardened
- 3,300 lb. Working Load
- 24,000 lb. Average Ultimate Strength
- 3.9 lbs. Per Foot



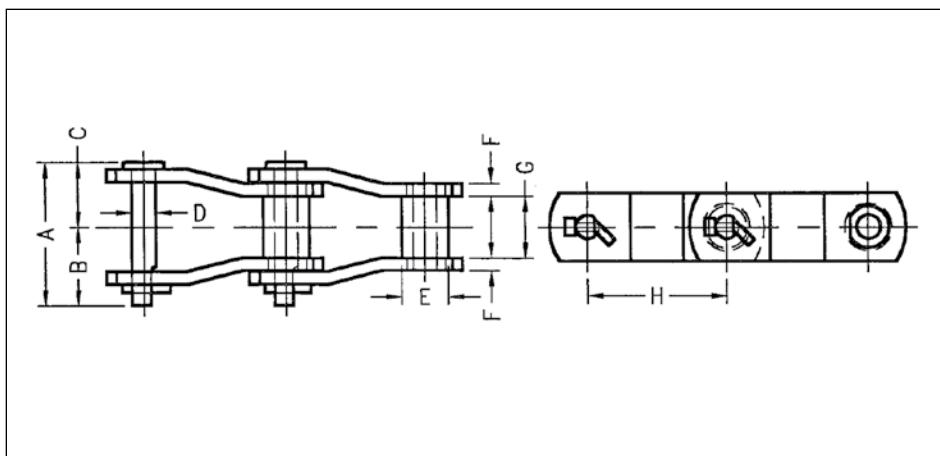
APPLICATIONS

For use as a drive chain in wastewater treatment applications.

BENEFITS

VC78SS stainless steel chain is a high strength chain made to withstand highly corrosive and abrasive environments. Designed to stand up to high load applications with very minimal stretch.

VC78SS STAINLESS STEEL CHAIN



Additional equipment available for rectangular clarifiers, bar screens and grit collectors;

- Chain and Attachments
- Other Drive Chains
- Sprockets
- Bearings
- Flights
- Filler Blocks
- Wear Materials
- Hardware

Chain Part No.	A	B	C	D	E	F	G	H(pitch)
VC78SS	2.540	1.318	1.222	.438	.875	.236	1.125	2.609

403 HARDENED STAINLESS STEEL CHAIN

MAXIMUM ABRASION AND CORROSION RESISTANCE

CAN BE USED WITH METALLIC OR NON-METALLIC STANDARD 78 SERIES SPROCKETS

RECTANGULAR CLARIFIER

VIKING CHAINS ENVIRO

a division of

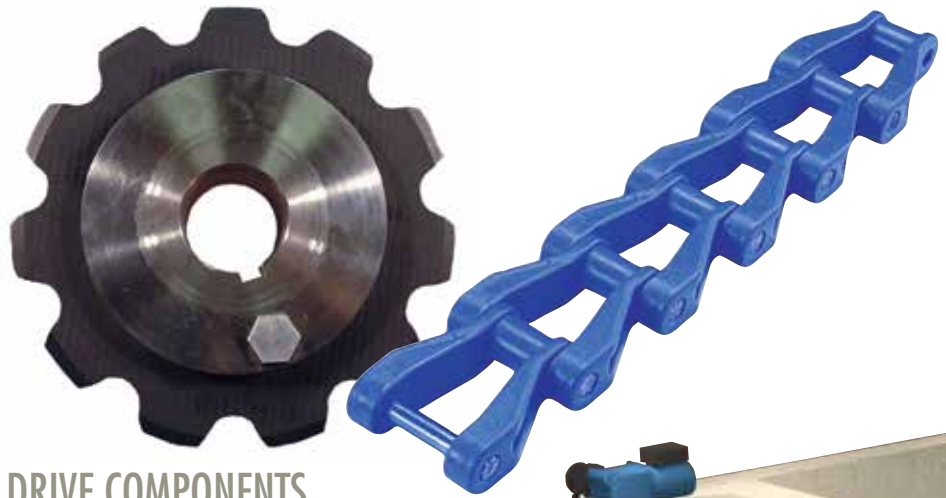


The Viking Chains Enviro Division has been providing quality components for Municipal and Industrial Water & Wastewater applications for over 15 years. The Viking Chains Enviro Division offers full system integration, supported by a worldwide dedicated rep network.

System projects of all sizes are handled 100% by the Viking Chains Enviro Division. We continue to link a chain of satisfied clients around the world.

Over 150 years of chain experience supports our application and engineering promise of being a "solution provider". We believe it is essential to provide on site service and client consultation to properly assess the customer's needs and individual application requirements.

Our quality products include Chain, Sprockets, Flights, Wear Shoes, Bearings, Shafts, and Static Sleeve Bushings. Practically every consumable in Clarifiers, Grit Channels, Bar Screens, Traveling Water Screens for all water and waste water applications are supplied by Viking Chains Enviro Division.



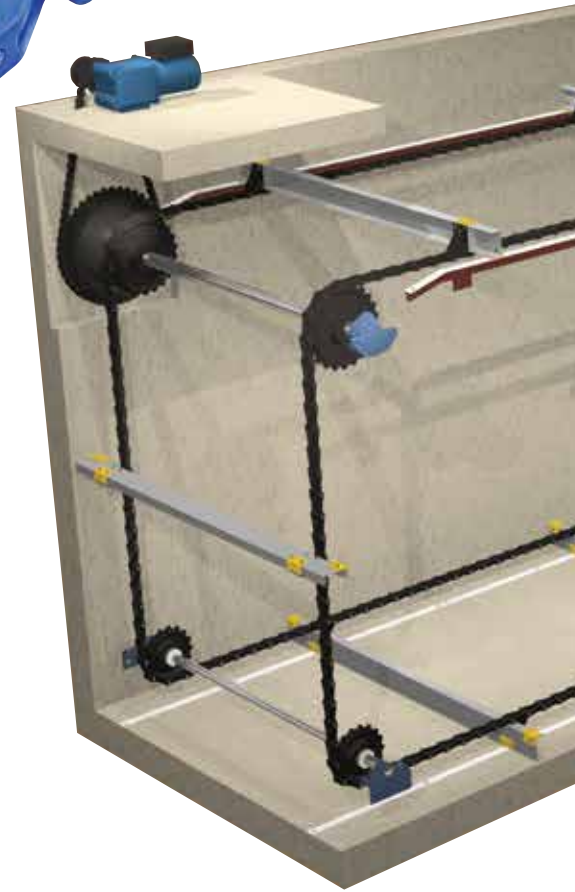
DRIVE COMPONENTS

- Engineered to match system requirements and special tank layout considerations
- Non-metallic, 403 stainless steel and cast iron drive chains
- Shear pin drive hub assemblies with replaceable non-metallic sprocket rim
- Solid or split body non-metallic or cast iron driven sprockets



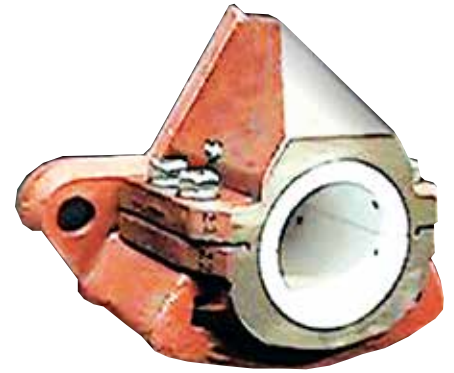
FLIGHTS

- High strength fiberglass
- Ultra high-strength aluminum
- Laminate fir to replace existing redwood also available
- Stainless steel hardware
- 6 or 8 inch available for standard F226 or F228 attachments



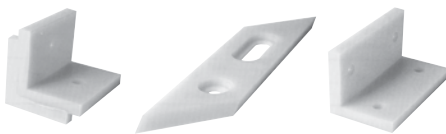
COLLECTOR DRIVE UNITS

- Viking drive units are designed to run economically 24/7/365



WALL BEARINGS

- Babbitted or UHMW lined
- Split designs for ease of replacement
- Bolt patterns designed to match most existing wall anchor locations for retrofit applications
- Static shaftbrackets also available in conjunction with sprocket sleeve bearings



WEAR COMPONENTS

- UHMW wear strips
- Stainless steel hardware
- UHMW wear shoes are reversible to provide two wear surfaces
- Cast iron knock-out wear shoes available for cast iron collectors

COLLECTOR CHAIN

Engineered Specific Options:

- High Strength non-metallic
- 403 Stainless Steel
- Cast Iron
- 6 or 8 inch flight attachments

COLLECTOR SPROCKETS

Materials matched to specific application based on load and abrasion:

- Nylon, UHMW and polyurethane available
- With or without integrally molded chain saver rim
- Hunting tooth design
- Split or solid construction
- High-strength hub designs have non-binding hardware to prevent accumulation

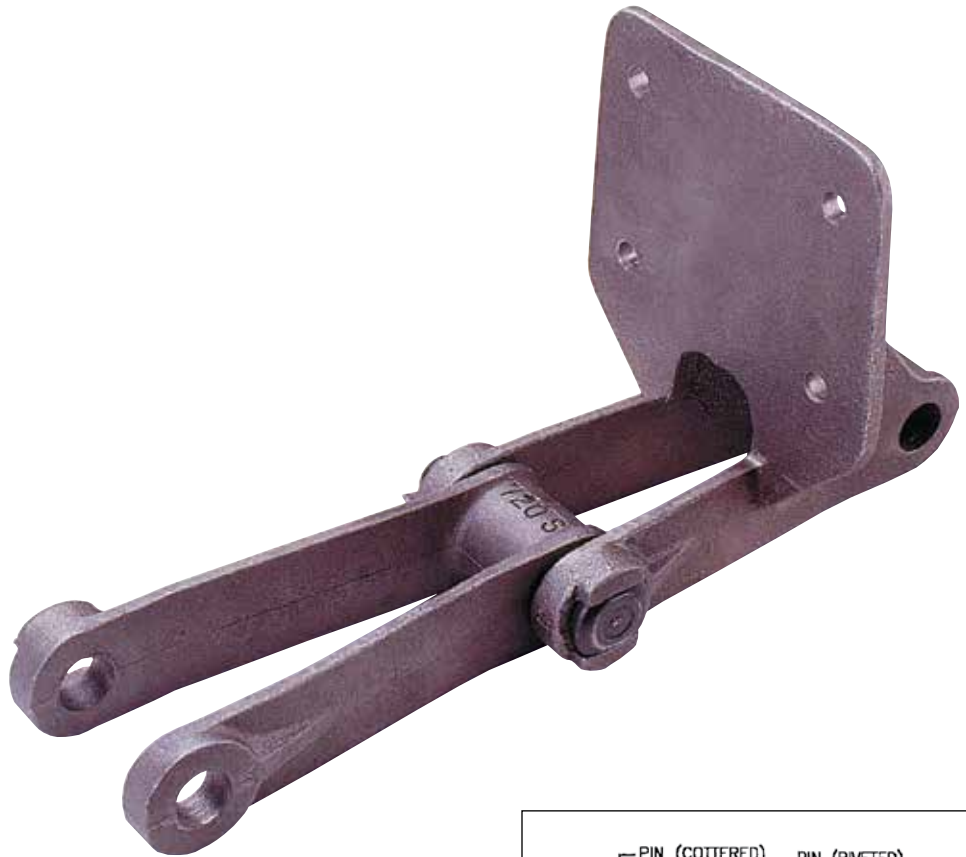
VC CAST IRON CHAIN

VC720S - PMI CHAIN

CHAIN SPECIFICATION

Pearlitic Malleable Iron Chain

- 6.00" Pitch
- Heat Treated Pin
- 304 Stainless Steel Cotter
- Meets ANSI Standards
- Cottered or Riveted
- Maximum Working Load: 4,250 lbs.
- Average Ultimate Strength: 39,000 lbs.
- Weight: 5.2 lbs./ft.

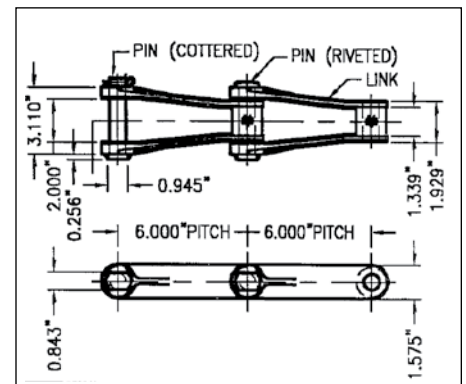


ATTACHMENTS AVAILABLE

F226, F228, A21, A42, A53, AD474, AM116, F2, F3 (SF-4), K2, M1.

APPLICATIONS

For use in primary clarifiers, secondary clarifiers, bar screens and grit applications.



BENEFITS

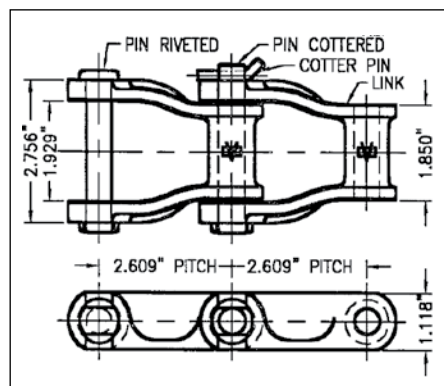
VC720S Pearlitic Malleable Chain offers maximum strength in harsh environments. This chain is interchangeable with other chains manufactured under ANSI standards. Heat treated pin and 304 stainless steel cotter supplied specifically for wastewater applications.

VCH78 - PMI CHAIN

CHAIN SPECIFICATION

Pearlitic Malleable Iron Chain

- 2.609" Pitch
- Heat Treated Pin
- 304 Stainless Steel Cotter
- Meets ANSI Standards
- Cottered or Riveted
- Maximum Working Load: 2,850 lbs.
- Average Ultimate Strength: 22,300 lbs.
- Weight: 4.2 lbs./ft.



APPLICATIONS

For use as a drive chain in wastewater treatment applications.

BENEFITS

VCH78 Pearlitic Malleable Chain offers maximum strength in harsh environments. This chain is interchangeable with other chains manufactured under ANSI standards. Heat treated pin and 304 stainless steel cotter supplied specifically for wastewater applications.

Additional equipment available for rectangular clarifiers, bar screens and grit collectors;

- Other Chain and Attachments
- Bearings
- Filler Blocks
- Other Drive Chains
- Flights
- Wear Materials
- Sprockets
- Hardware

VC SPROCKETS

SPROCKET DESIGNS AVAILABLE



CAST NYLON SPROCKETS



ALL UHMW SPROCKETS & MOLDED UHMW SPROCKETS C/W COPOLYMER HUBS



COMBINATION SPROCKETS - CAST IRON BODY WITH UHMW SEGMENTAL RIMS



CAST IRON CHILLED RIM SPROCKETS

Poly Urethane Sprockets and Stainless Steel Sprockets also available

CAST IRON CHILLED RIM SPROCKETS

CHAIN COMPATIBILITY

Recommended for use with cast iron chain.

OPTIONS

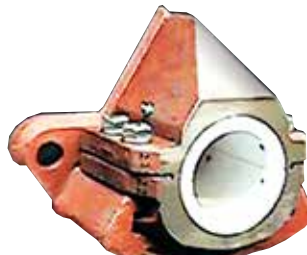
- Various hub designs; A, B, C, C-Offset.
- Chain Saver Rims or Non Chain Saver Rims on all 720 style sprockets.
- Dished design available for some 78 style sprocket sizes.
- Split or solid construction.

BENEFITS

Stands up to harsh environments and high grit applications



SHEAR PIN ASSEMBLY



WALL BEARING



PILLOW BLOCK



STATIC SLEEVES

Other related products available;

- | | | |
|--------------------------------------|------------------|-----------------|
| • Shear Pin Sprocket Assemblies | • Static Sleeves | • Wall Bearings |
| • Jawclutch and Handwheel Assemblies | • Stub Shafts | • Set Collars |
| | | • Pillow Blocks |

Additional equipment available for rectangular clarifiers, bar screens and grit collectors;

- | | | |
|-------------------------|-----------------|------------------|
| • Chain and Attachments | • Flights | • Wear Materials |
| • Drive Chain | • Filler Blocks | • Hardware |

NON-METALLIC SPROCKETS

CHAIN COMPATIBILITY

Recommended for use with non-metallic or stainless steel chains.

OPTIONS

- Chain Saver Rims or Non Chain Saver Rims on all 720 style sprockets.
- Dished design available for some 78 style sprocket sizes.
- Split or solid construction.

BENEFITS

All non-metallic sprockets are lightweight for easy installation and change out.

Combination Rims; can be reversed for extra wear. Easy installation and change out.

VC FIBERGLASS FLIGHTS

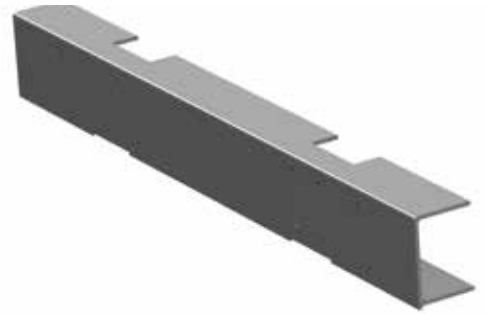
"C" CHANNEL FIBERGLASS FLIGHT



ULTRA FLIGHT



SUPER FLIGHT



"C" CHANNEL FIBERGLASS FLIGHTS

APPLICATIONS

For use in primary clarifiers, secondary clarifiers, and cross collectors, with tanks up to 22' wide.

SIZES

Standard 6" and 8"

WEIGHT

6" = 1.37 lbs./ft.

8" = 1.50 lbs./ft.

FIBERGLASS ULTRA FLIGHT

APPLICATIONS

For use in primary clarifiers, secondary clarifiers, and cross collectors, with tank widths 22' to 28' wide.

SIZE

8"

WEIGHT

2.05 lbs./ft.

FIBERGLASS HEAVY DUTY SUPER FLIGHT

APPLICATIONS

For use in primary clarifiers and secondary clarifiers, with tank widths 28' to 40' wide*

SIZE

8"

WEIGHT

4.54lbs./ft.

MATERIAL

Fiberglass reinforced isophthalic polyester resin. 55% minimum glass content.

* Based on site conditions.

LAMINATED WOOD FLIGHTS

LAMINATED WOOD FLIGHTBOARD



APPLICATIONS

For use in primary clarifiers, secondary clarifiers, and cross collectors.

SIZES

2 1/2" X 6" = Standard 6"

2 1/2" X 7 1/2" = Standard 8"

MATERIAL

Laminated Wood – Douglas Fir

Kiln dried to 12% to 15% moisture content with gradient not to exceed 5%.

WEIGHT

6" = 3.4 lbs./ft.

8" = 4.3 lbs./ft.

BENIFITS

Decay hazard in wastewater applications much less than other wood flight alternatives. Long life in very harsh environments.

Additional equipment available for rectangular clarifiers, bar screens and grit collectors;

- Chain and Attachments
- Drive Chains
- Sprockets
- Bearings
- Filler Blocks
- Wear Materials
- Hardware

VC ALUMINIUM FLIGHTBOARDS

ALUMINUM FLIGHTBOARDS

APPLICATIONS

For use in primary clarifiers, secondary clarifiers, and cross collectors.

SIZE

2 1/2" X 7" for use with 8" flight attachments. Can be supplied in custom cut lengths up to 32 feet long.



WEIGHT

2.41 lbs./ft.

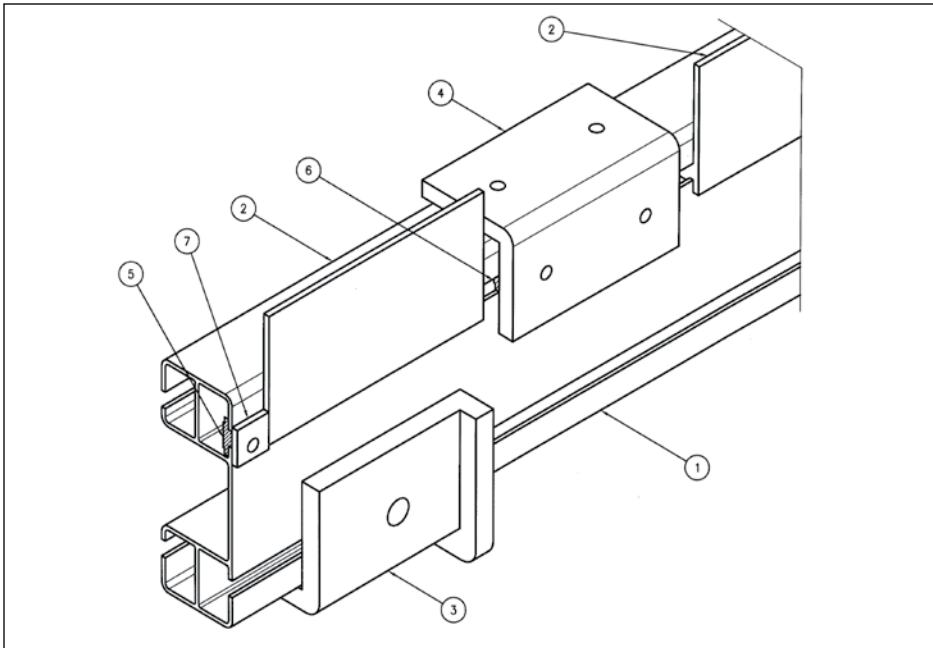
MATERIAL

6063-T6 Aluminum



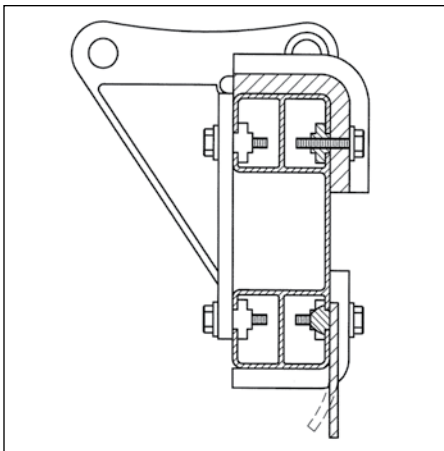
BENEFITS

- Lightweight for easy installation.
- No need for filler blocks.
- No notching or drilling required.
- Can be completely assembled in advance with minor field adjustments.
- Can be repaired and welded on-site or in a shop.
- Can be **RECYCLED** for salvage value after use.



ALUMINIUM EXTRUDED FLIGHTS CAN BE SUPPLIED WITH;

- Carry and return wearshoes made of UHMW.
- Hardware which includes aluminum extruded nuts and stainless steel bolts and washers for attaching wearshoes and flight attachments.
- Rubber scraper assembly complete with retainer plate, stainless steel bolts and washers, and extruded nuts.



ITEM	QTY.	DESCRIPTION
1	1	FLIGHT
2	1	RUBBER SCRAPER
3	2	GUIDE/RETURN SHOE
4	2	CARRYING/WEAR SHOE
5	4	SINGLE NUT
6	6	DOUBLE NUT
7	1	WIPER RETAINER

Additional equipment available for rectangular clarifiers, bar screens and grit collectors;

- Chain and Attachments
- Drive Chain
- Other Flights
- Sprockets
- Bearings
- Filler Blocks
- Wear Materials
- Hardware

VC WEAR MATERIALS

PRODUCTS

- Carry Wearshoes
- Return Wearshoes
- Grit Collector Shoes
- Wearstrips

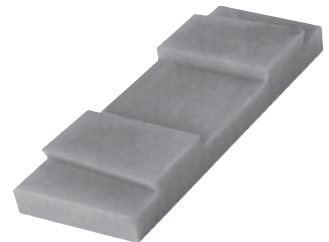
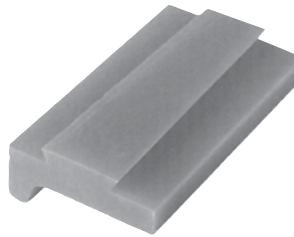
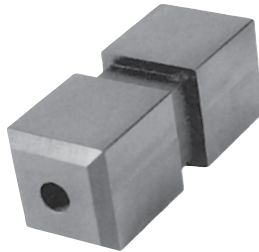


MATERIALS AVAILABLE

- Wearshoes: UHMW
Polyurethane
Cast Nylon
- Wearstrips: UHMW

APPLICATIONS

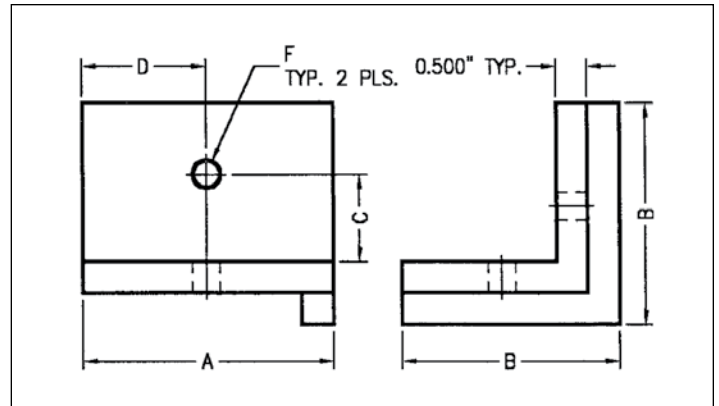
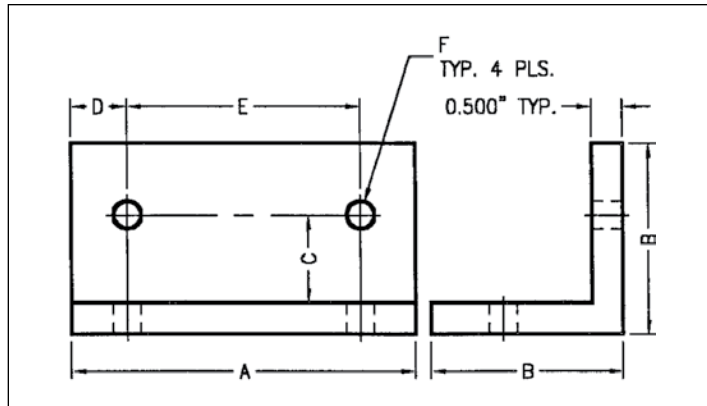
For use in primary and secondary clarifiers, bar screens, and grit applications.



BENEFITS

VC wear materials are lightweight and designed for easy installation. Components promote smooth and efficient operation allowing for extended system equipment life.

WEARSHOES



STANDARD CARRY WEARSHOE

Chain Part No.	A	B	C	D	E	F
404-0083	5.50	3.0	1.375	.875	3.75	.5625

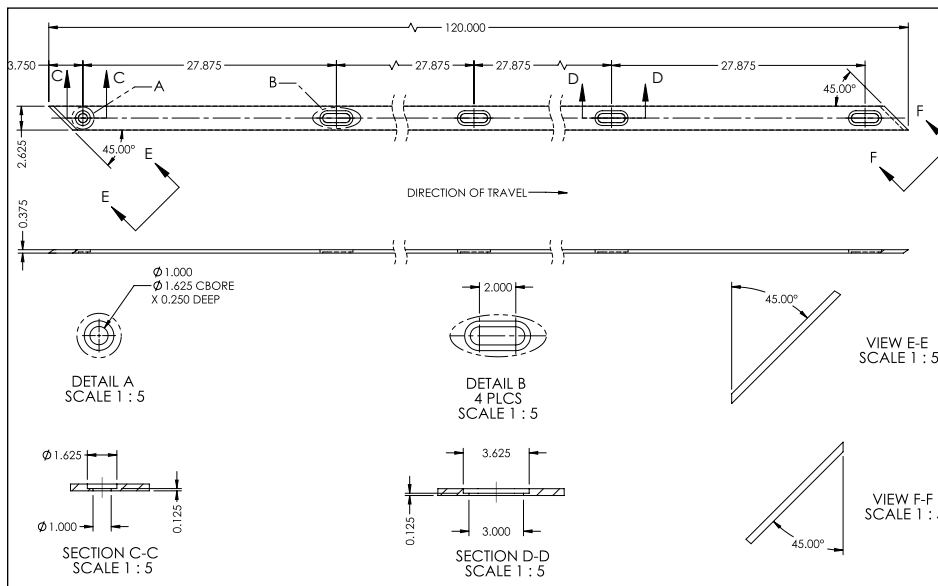
All dimensions are in inches

STANDARD RETURN WEARSHOE

Chain Part No.	A	B	C	D	E	F
404-0089	5.00	3.50	1.375	2.50	---	.5625

Custom wearshoes available upon request

WEARSTRIPS



STANDARD SIZES AVAILABLE

Thickness; 3/8", 1/2", 5/8"

Widths; 2 1/2", 2 5/8", 3", 3 1/2", 4", 5"

- Four hole and custom wearstrips available upon request.
- 1-3/8" weld washers can be supplied for spot weld or thru-bolt fabricating.
- 316SS floor wear strip and 316SS return rail hardware sets available upon request.

Additional equipment available for rectangular clarifiers, bar screens and grit collectors;

- Chain and Attachments
- Drive Chains
- Sprockets
- Bearings
- Flights
- Filler Blocks
- Hardware

CONTACT US



Langley CAD HQ

27474 Gloucester Way, Langley BC, Canada V4W 4A1
t 604.882.1602 f 604.882.1603 toll free 1.800.324.1244

Quebec Branch

1892 1'Ere Rue, St Romuald, QC, Canada G6W 5M6
t 418.834.5116 f 418.834.5901 toll free 1.888.650.6090

Portland USA HQ

9525 SW Commerce Circle, Wilsonville, OR, USA 97070
t 503.222.9992 f 503.222.0073 toll free 1.800.367.9992

Atlanta Branch

3411 Novis Pointe, Acworth, GA, USA 30101
t 678.797-0777 f 678.797.5554 toll free 1.877.941.1500

www.connexusindustries.com