



INDUSTRIES INC

Chain & Industrial Manufactured Solutions

LEAF CHAIN

WELDED STEEL CHAIN

**WELDED STEEL
DRAG CHAIN**

TRIMMER CHAIN

MALLEABLE CHAIN

COMBINATION CHAIN

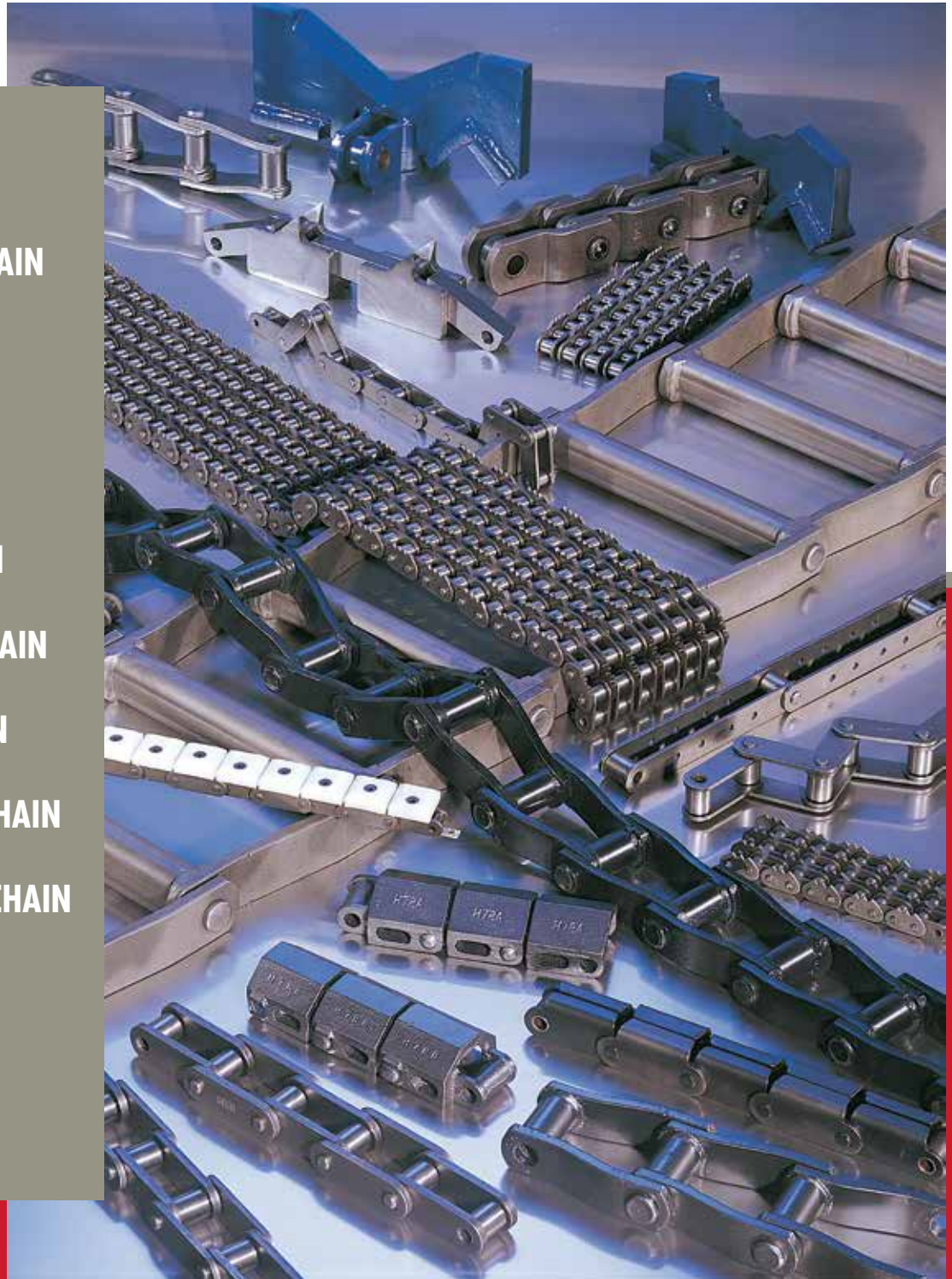
SHARP TOP CHAIN

NON-MARKING CHAIN

DOUBLE LENGTH CHAIN

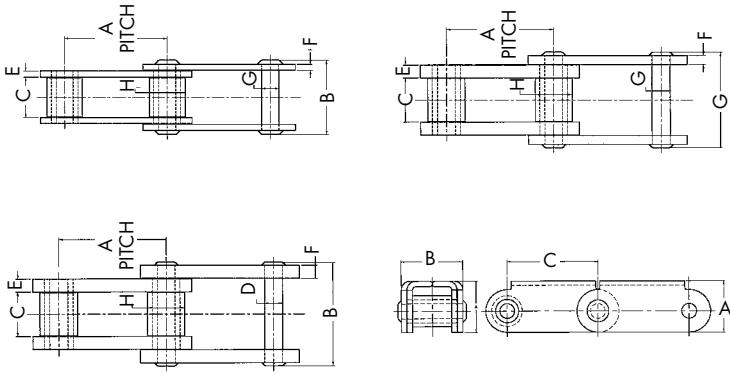
ROLLER CHAIN

**ROLLER CHAIN
ATTACHMENTS**



www.connexusindustries.com

TRIMMER CHAIN

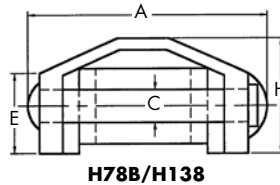
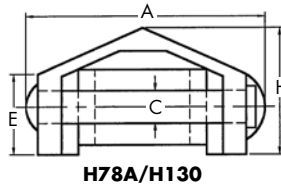
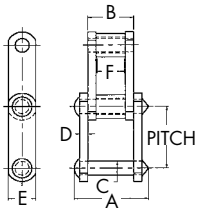


CHAIN	A	B	C
81X ROOFTOP	1 1/2	1 13/16	2.609

CHAIN	PITCH	LINKS/FT	WT/FT LBS	B	C	E	F	G	H
81X	2.609	4.6	2.6	1.895	1 1/16	5/32	5/32	7/16	29/32
81X H	2.609	4.6	3.9	2.325	1 1/16	5/16	7/32	7/16	29/32
81X XHD	2.609	4.6	4.6	2.510	1 1/16	5/16	5/16	7/16	29/32
81X ROOFTOP	2.609	4.6	6.0	1 13/16	1 1/16	5/32	5/32	7/16	29/32
*3939 G4	8.000	1.5	1.62	1.895	1 1/16	5/32	5/32	7/16	29/32

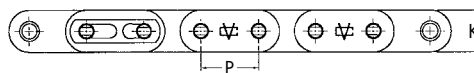
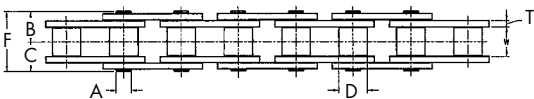
* 4 holes per sidebar 9/32 diameter @ 1 1/2" & 4" centers

MALLEABLE & COMBINATION CHAIN



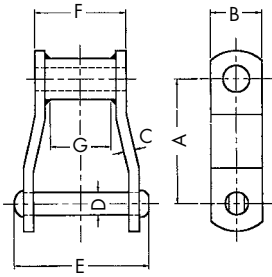
CHAIN	PITCH	LINKS/FT	WT/FT LBS	A	B	C	D	E	H
H78	2.609	4.6	4.3	3 3/8	-	1/2	-	11/16	1 11/16
H78 A/B	2.609	4.6	5.6/6.2	3 3/8	-	1/2	-	11/16	1 11/16
H130/138	4.000	3	5.3/5.9	3 3/8	-	1/2	-	17/64	1 11/16
C55	1.630	7.4	2.0	1.813	17/32	3/8	7/32	3/4	3/4
C188	2.609	4.6	3.5	2 7/8	19/16	1/2	1/4	1 1/8	
C131	3.075	3.9	6.7	3 3/8	2	5/8	3/8	1 1/2	1 1/8 1/8
C102B	4.000	3	6.4	4 9/16	25/32	5/8	3/8	1 1/2	1 1/8
C55A/B	4.000	7.4	2.5	1.813	17/32	3/8	7/32	23/32	1 5/8

CONVEYOR CHAIN "H" SERIES



CHAIN	PITCH	ULT STG	LINKS/FT	WT/FT LBS	F - RIV	F - COTT	A	B	C	D	K	W	T
C2060H	1.5	12,300	8	1.03	1.130	1.221	.234	.573	.652	.469	.677	.500	.125
C2080H	2.0	20,200	6	1.65	1.398	1.528	.312	.720	.823	.625	.890	.625	.156
C2100H	2.5	30,800	4.8	2.38	1.662	1.800	.375	.858	.965	.750	1.126	.750	.187

WELDED STEEL CHAIN



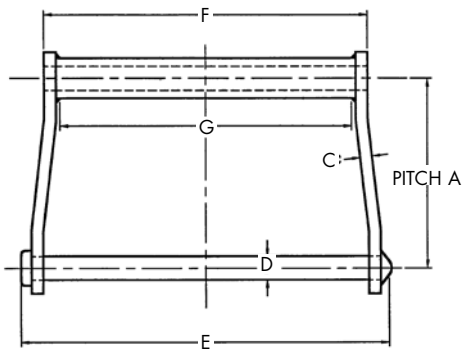
- WR chains have heat treated rivets
- WH chains are fully heat treated
- Both are available from stock



CHAIN	A	B	C	D	E	F	G	ULT STG/LB	LINKS/FT	WT/FT ^{LBS}
WR 78	2.609	1 1/4*	1/4	1/2	3	2	1	29,800	4.6	4.1
WR 78XHD	2.640	1 1/4	3/8	9/16	3 9/32	2	1	32,700	4.5	6.3
WR 82	3.075	1 1/4	1/4	9/16	3 5/16	2 1/4	1 3/8	32,780	3.9	4.7
WR 82XHD	3.075	1 1/2	3/8	3/4	3 13/16	2 3/8	1 1/8	50,400	3.9	8.4
WR 124	4.000	1 1/2	3/8	3/4	4 1/4	2 13/16	1 1/2	50,400	3	8
WR 111	4.760	1 3/4	3/8	3/4	4 13/16	3 3/8	1 7/8	50,400	2.5	8.6
WR 106	6.000	1 1/2	3/8	3/4	4 1/4	2 13/16	1 1/2	50,400	2	6.5
WR 106XHD	6.050	2	1/2	1	4 7/8	3	1 1/2	85,500	2	11.5
WR 124XHD	4.050	2	1/2	1	4 7/8	3	1 1/2	85,500	3	14.5
WR 132	6.050	2	1/2	1	6 1/4	4 27/64	3 1/8	85,500	2	13.5
WR 132XHD	6.050	2	5/8	1	6 3/4	4 11/16	3 1/8	118,500	2	15.9
WR 150	6.050	2 1/2	1/2	1	6 1/4	4 27/64	3 1/8	120,000	2	15.5
WR 150	6.050	2 1/2	5/8	1	6 3/4	4 11/16	3 1/8	122,000	2	18
WR 157	6.050	2 1/2	5/8	1 1/8	6 3/4	4 5/8	3 1/8	148,000	2	20

* 1 1/8 USA

WELDED STEEL DRAG CHAIN



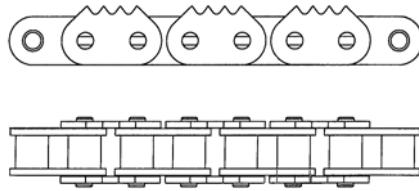
- All drag chains have heat treated rivets
- R = heat treated rivets



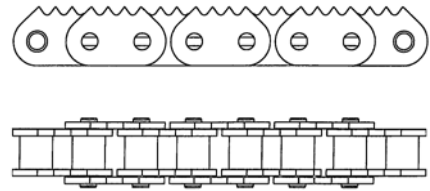
CHAIN	A	B	C	D	E	F	G	ULT STG/LB	LINKS/FT	WT/FT ^{LBS}
WDR 102	5.000	1 1/2	3/8	3/4	9 1/4	7 3/4	6 3/8	51,000	2.4	12
WDR 104	6.000	1 1/2	3/8	3/4	6 3/4	5 3/8	4 1/8	51,000	2	8.6
WDR 110	6.000	1 1/2	3/8	3/4	11 3/4	10 1/4	9	51,000	2	12
WDR 112	8.000	1 1/2	3/8	3/4	11 3/4	10 1/4	9	51,000	1.5	10
WDR 116	8.000	1 3/4	3/8	3/4	15 1/2	14 1/8	13	51,000	1.5	12.9
WDR 120	6.000	2	1/2	7/8 - 1	12	10 1/4	8 3/4	85,000	2	19
WDR 122	8.000	2	1/2	7/8 - 1	12	10 1/4	8 3/4	85,000	1.5	16
WDR 480	8.000	2	1/2	7/8 - 1	14 1/2	12 3/4	11	85,000	1.5	17.2
WDR 118	8.000	2	1/2	7/8 - 1	16 5/8	14 7/8	13 1/4	85,000	1.5	19.5

SHARP TOP CHAIN

- 60-1, 60-2, 60-3, ST & SL Series
- 80-1, 80-2, 80-3, 80-4, 80-6, ST, PEP, & SL Series
- 100-1, 100-2, 100-3, 100-6, ST & SL Series
- 120-1, 120-2, ST & PEP Series



SHARPTOP



SHARPTOP "PEP"

Many other sizes available from stock

DOUBLE LENGTH INFEED / SCANNING CHAIN, GUIDE RAIL & SPROCKETS



- High speed applications
- Accurate guiding systems
- Treated surfaces for extended wear life
- VC 200LR has grease fittings in each rivet



PRODUCT LINE-UP	APPLICATION
#200, 300, 400 & 600 Series Sharp Chain	Primary Breakdown
Sharp Top Chain	Edgers, Gangs, Cant Infeed/Outfeed
VC 100/ VC 200 & VC 200LR	Double Length Infeed Chain, Flights, Sprockets & Guiding System
Trimmer Chain	Sorters, Trimtables
Welded Steel Chain	Transfers, Log Decks
Heat Treated Welded Steel Chain	High Speed, Abrasive Applications
Stainless Steel Chain	All Types
Metric Chain	European Equipment, Transfer Decks
Malleable Chain	Transfer Decks, Landing Tables
Non-Marking Chain	Reman, Planer Mill Applications
Sprockets	All Types

LANGLEY CAD HQ

27474 Gloucester Way, Langley BC, Canada V4W 4A1
t 604.882.1602 f 604.882.1603 toll free 1.800.324.1244

QUEBEC BRANCH

1892 1^{re} Rue, St Romuald, QC, Canada G6W 5M6
t 418.834.5116 f 418.834.5901 toll free 1.888.650.6090

PORTLAND USA HQ

9525 SW Commerce Circle, Wilsonville, OR, USA 97070
t 503.222.9992 f 503.222.0073 toll free 1.800.367.9992

ATLANTA BRANCH

3411 Novis Pointe, Acworth, GA, USA 30101
t 678.797.0777 f 678.797.5554 toll free 1.877.941.1500