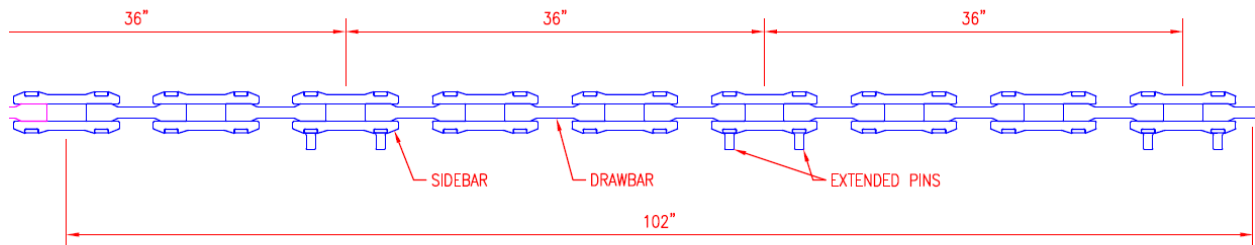


# CONNEXUS

## INDUSTRIES INC

Chain & Industrial Manufactured Solutions

### CASE STUDY FOR 698 RIVETLESS CHAIN



### APPLICATION

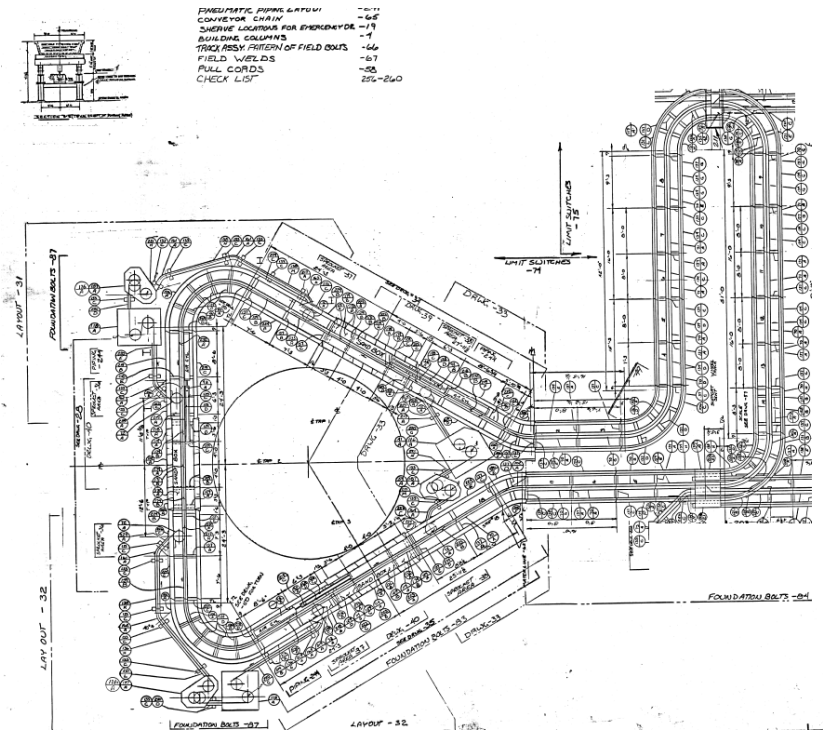
A carriage assembly is attached to the extended pins which suspends the chain around the conveyor.



The chain runs in a channel with extended pins vertical.



The conveyor is several hundred feet long.



**The chain engages a cart which weighs 14,000 pounds and travels at 100FPM. Up to 7 carts can be engaged on the chain at one time.**



## Problem

Previous chains have stretched and broken links constantly, within days of installation.

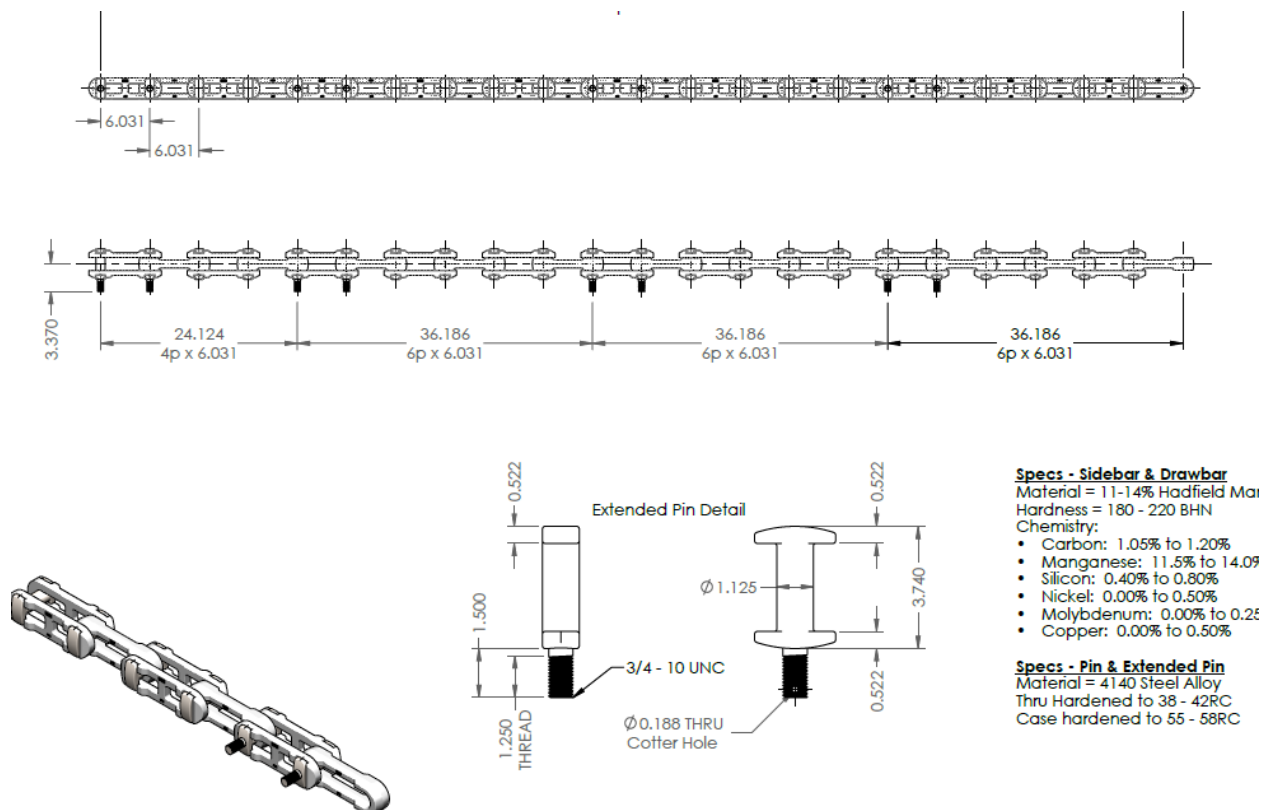
Customer worked with many chain suppliers but could not get a chain that would hold up in this difficult application, experiencing failure rates on at least 5% of the links.

They were very frustrated because of their experiences with our competition.



## SOLUTION

### OUR CXS 698 HADFIELD MANGANESE CHAIN W/EXT PINS E6P.



**“CXS” Hadfield Manganese Chain is the best choice for this application due to its’ ability to endure severe impact. This, combined with the ability to work-harden into the range of 500-600BHN makes this chain an excellent choice for this application.**

Since installation in May, they have removed only one link and have had zero breaks.

When calling to follow up, our newest customer said “We met with our Maintenance Team today. They have seen no issues with the CXS chain and it’s performing better than expected”

*Click on this link to view videos of the application.*

<https://www.dropbox.com/sh/sojuhp8wgm580m/AADs17vZIC8u5eDLgPlrqrA9a?dl=0>